

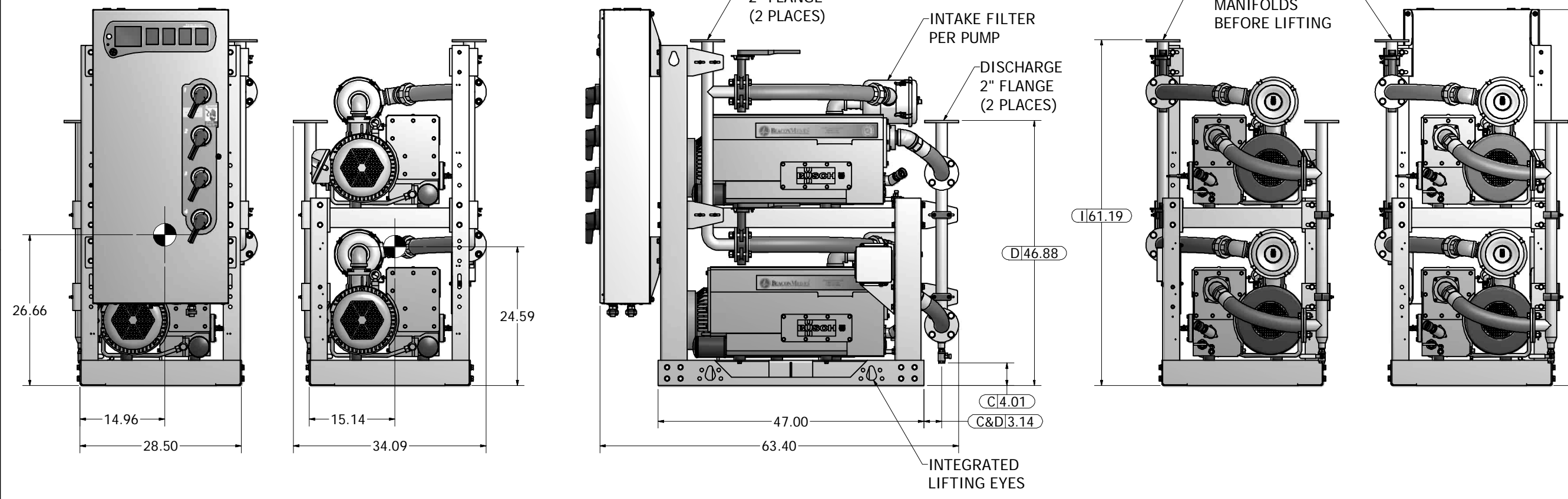
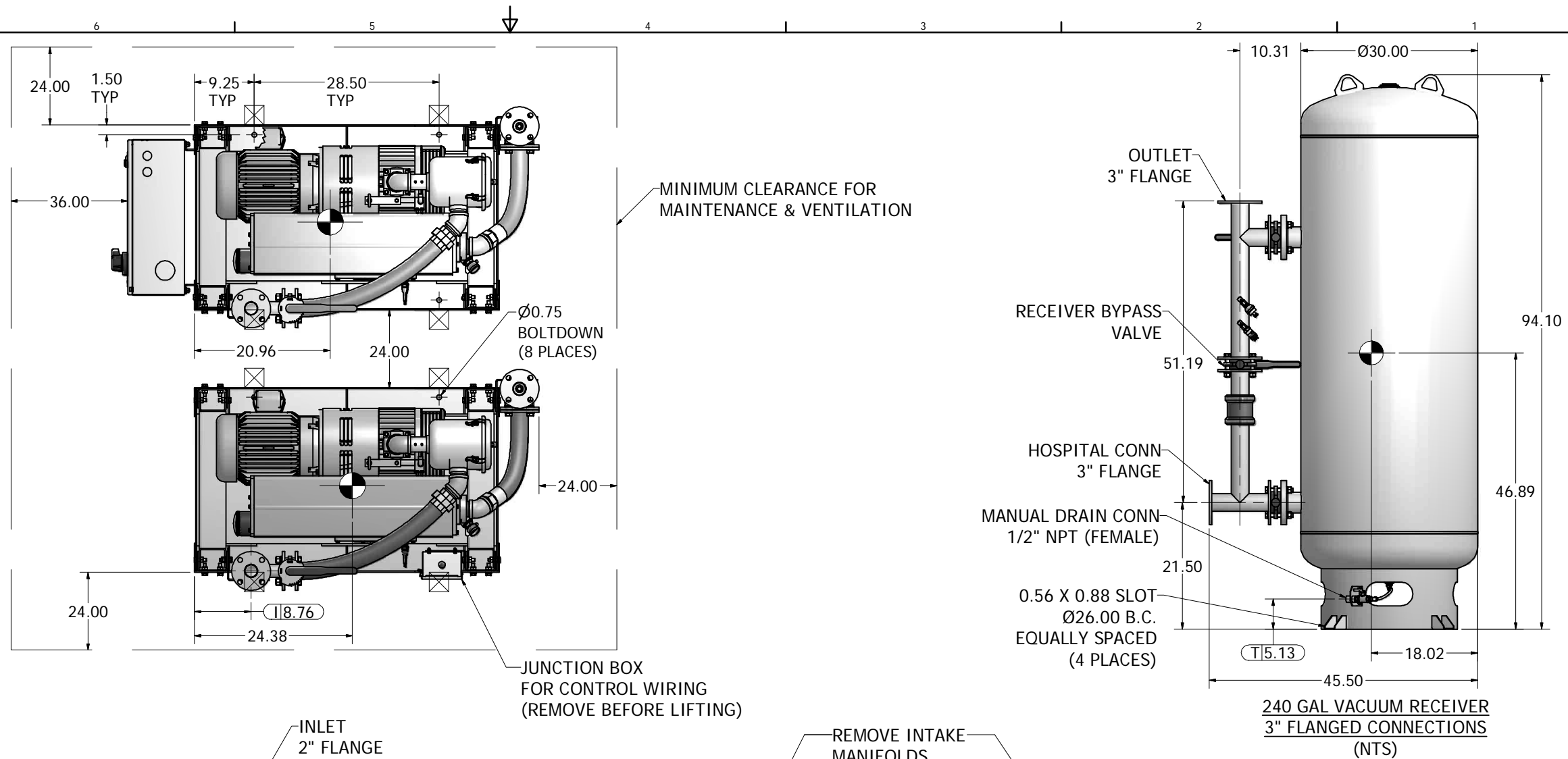
Notes:

- DX MODULE W/ PANEL WEIGHT: 1,473 LBS
DX MODULE WEIGHT: 1,307 LBS
240G TANK WEIGHT: 713 LBS

2. INDICATES LIFTING POINT.

3. DENOTES CENTER OF GRAVITY.

| SYSTEM CONNECTIONS | |
|--------------------|---------------------------|
| ID | DESCRIPTION |
| I | INLET LOCATION |
| D | DISCHARGE LOCATION |
| C | CONDENSATE DRAIN LOCATION |
| T | TANK DRAIN |



| | | | |
|--|----------------------------|--|------------|
| Revised: | Date: | Drawn: | Date: |
| | | USNKGW | 10/27/2010 |
| | | This drawing and the information contained therein remain the property of BeaconMedes and may not be used for other than the purpose for which it is loaned without the expressed written permission from BeaconMedes Engineering. | |
| Description: | | Part Number: | |
| GENERAL ASSEMBLY 7.5HP OX LUBE VAC MOD 240G RECEIVER | | 4107 8522 24 | |
| DN: | Rev: | Scale: 1/10 | |
| HOP100727 | 00 | D | |
| Sheet 1 of 1 | DO NOT SCALE THIS DOCUMENT | | |