

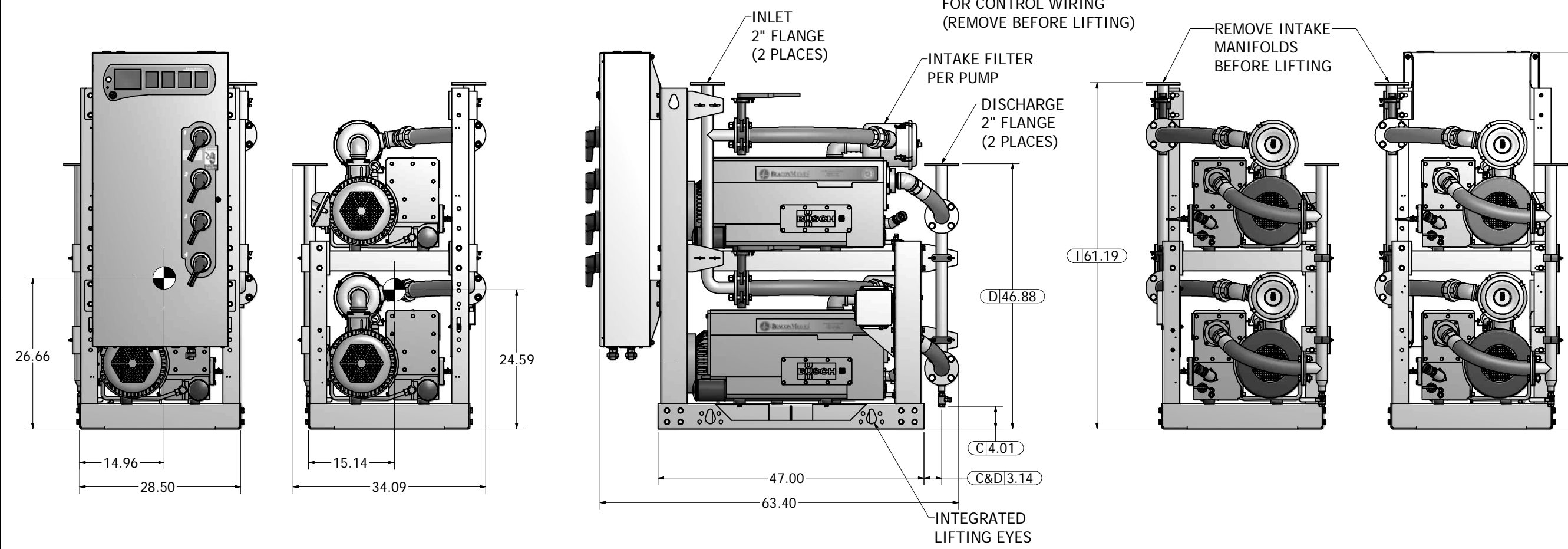
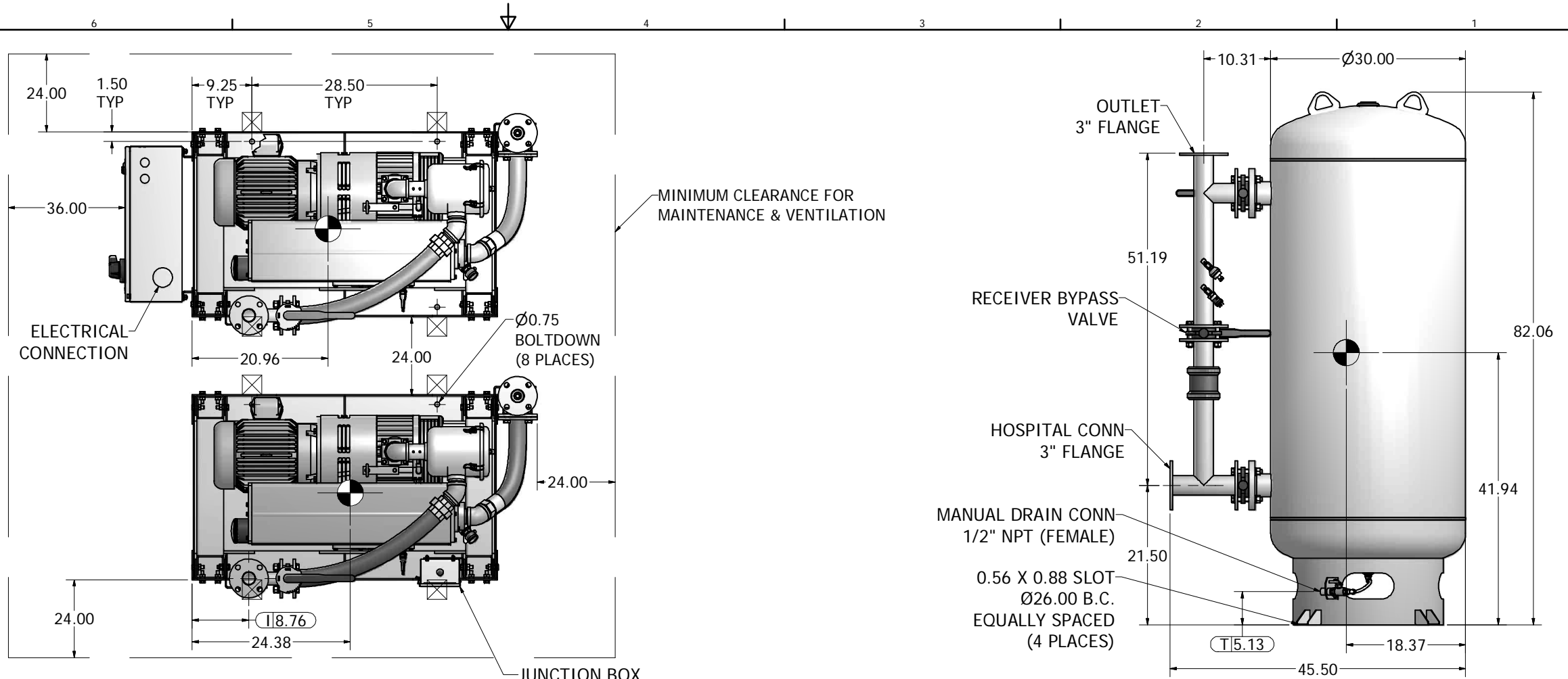
Notes:

- DX MODULE W/ PANEL WEIGHT: 1,473 LBS
DX MODULE WEIGHT: 1,307 LBS
200G TANK WEIGHT: 638 LBS

2. INDICATES LIFTING POINT.

3. DENOTES CENTER OF GRAVITY.

| SYSTEM CONNECTIONS | |
|--------------------|---------------------------|
| ID | DESCRIPTION |
| I | INLET LOCATION |
| D | DISCHARGE LOCATION |
| C | CONDENSATE DRAIN LOCATION |
| T | TANK DRAIN |



200 GAL VACUUM RECEIVER
3" FLANGED CONNECTIONS
(SCALE 1:10)

| | | | |
|------------------------------------------------------|-------|------------------------------------------------------------------------------------------------------------------------------------------------------------------------------------------------------------------------------------|------------------|
| Revised: | Date: | Drawn: USNKW | Date: 10/26/2010 |
| | | This drawing and the information contained therein remain the property of BeaconMedes and may not be used for other than the purpose for which it is loaned without the expressed written permission from BeaconMedes Engineering. | |
| Description: | | Part Number: 4107 8522 23 | |
| GENERAL ASSEMBLY 7.5HP OX LUBE VAC MOD 200G RECEIVER | | DN: HOP100727 | Rev: 00 |
| Sheet 1 of 1 | | DO NOT SCALE THIS DOCUMENT | |