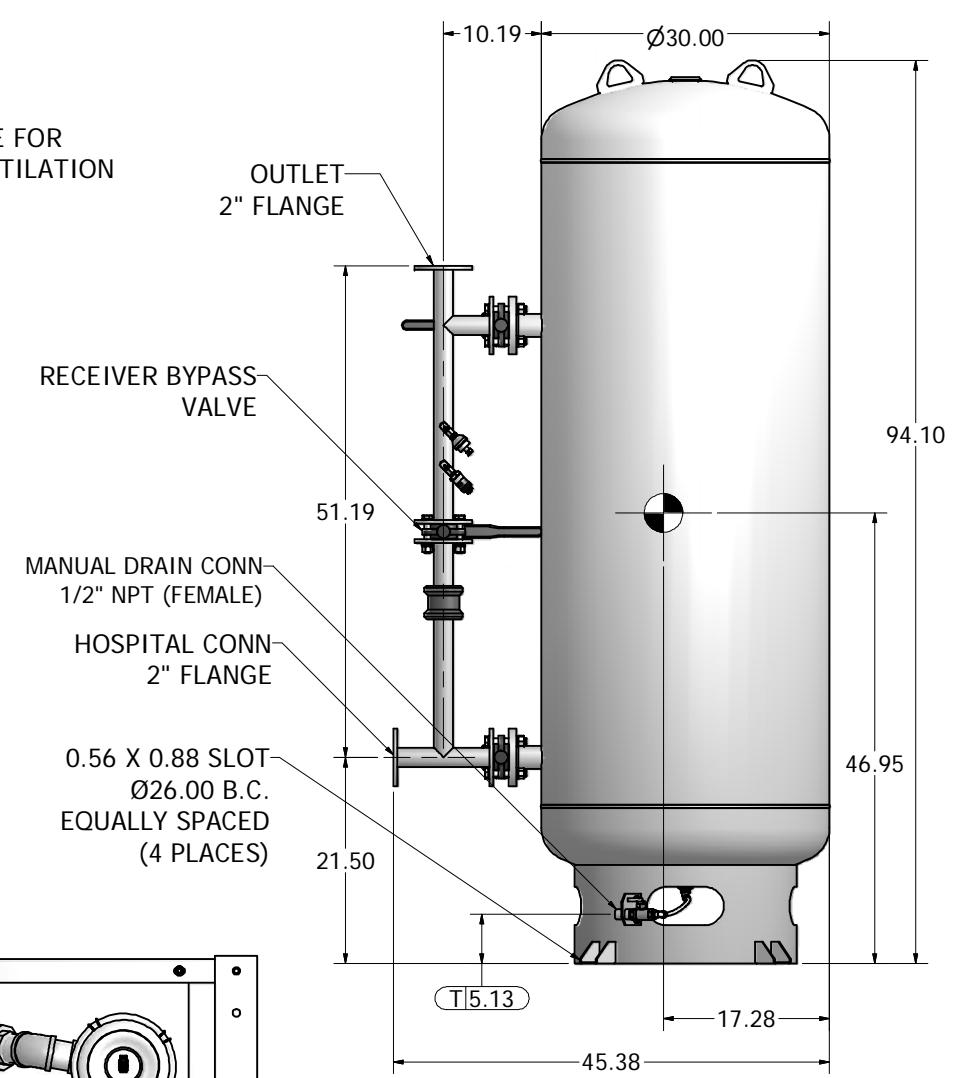
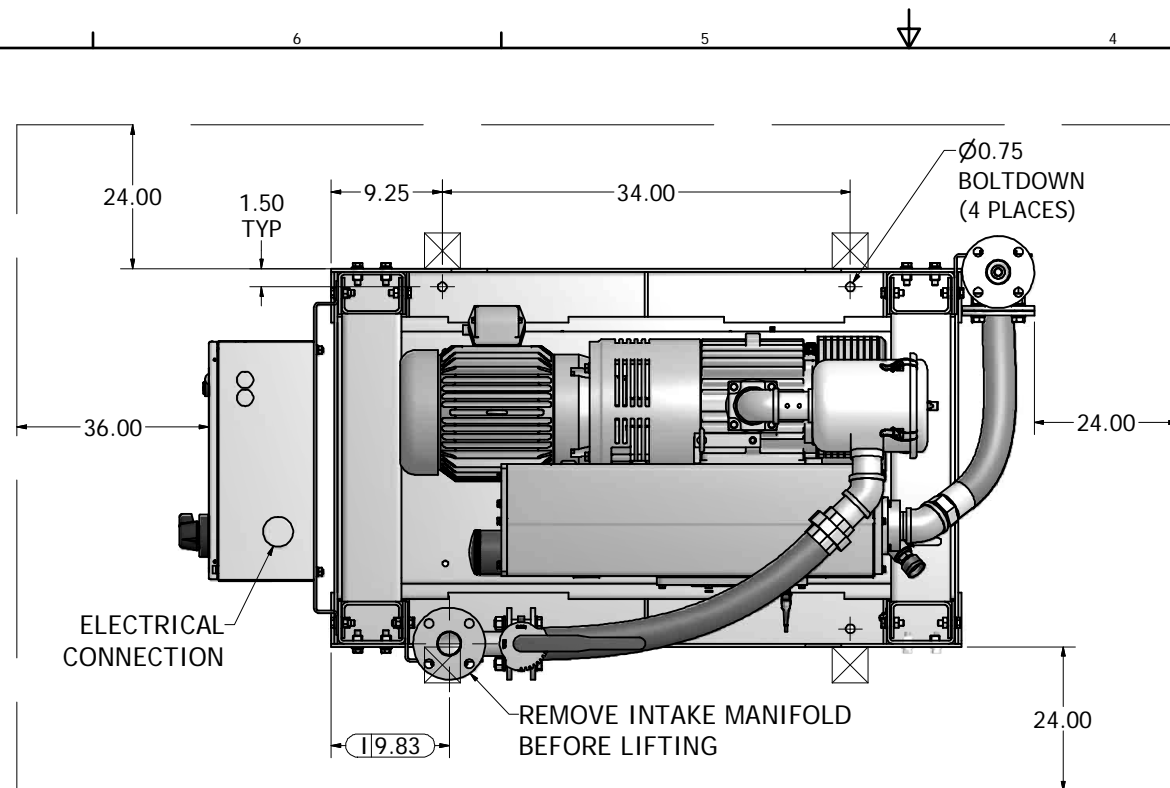


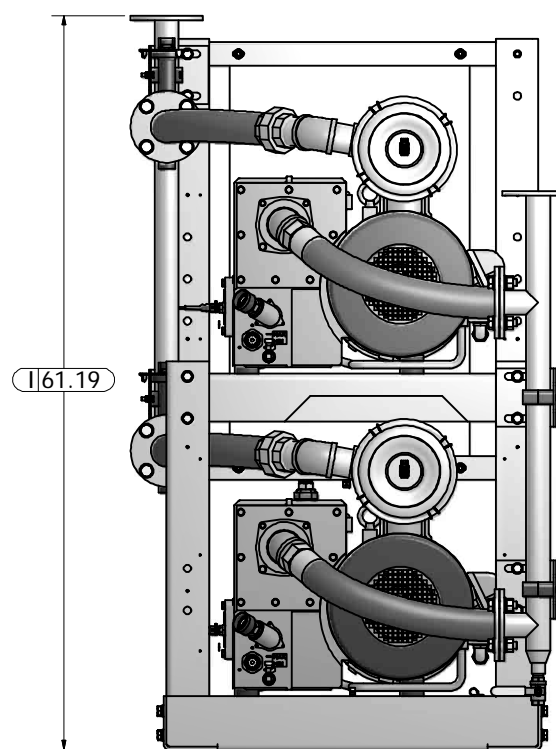
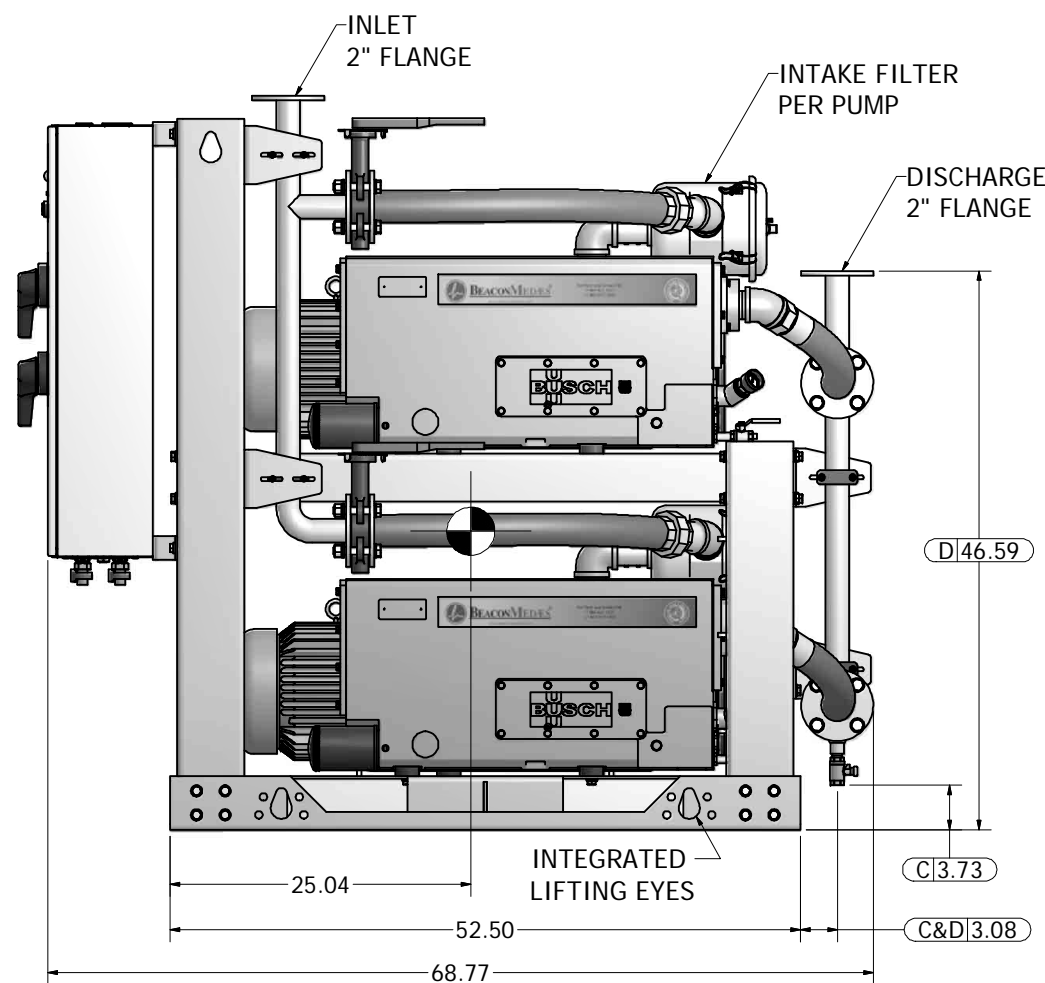
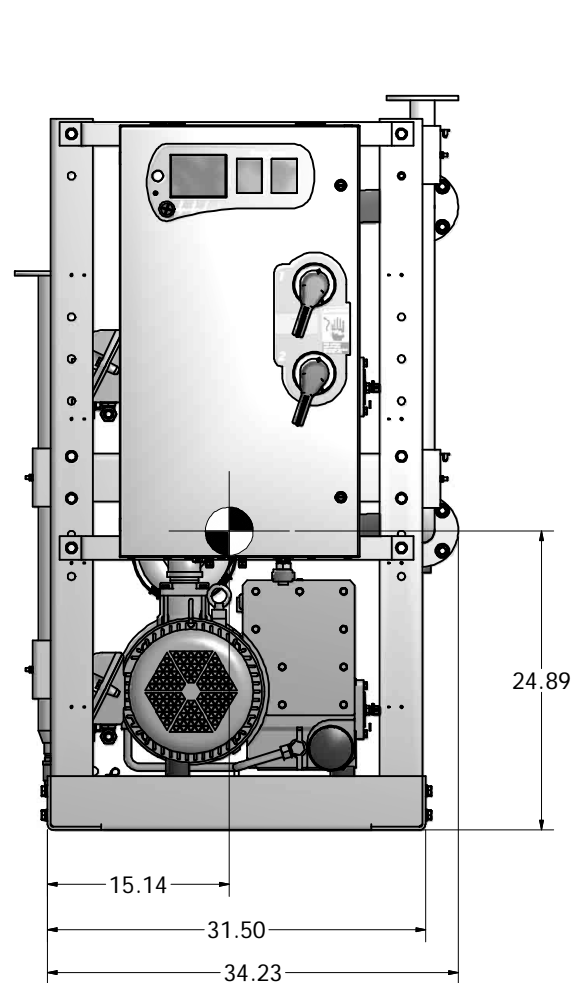
Notes:

1. DX MODULE WEIGHT: 1,868 LBS  
240G TANK WEIGHT: 693 LBS
2. ☒ INDICATES LIFTING POINT.
3. ● DENOTES CENTER OF GRAVITY.

SYSTEM CONNECTIONS	
ID	DESCRIPTION
I	INLET LOCATION
D	DISCHARGE LOCATION
C	CONDENSATE DRAIN LOCATION
T	TANK DRAIN



240 GAL VACUUM RECEIVER  
2" FLANGED CONNECTIONS  
(SCALE 1:10)



Revised:	Date:	Drawn: USNKW	Date: 10/21/2010
		This drawing and the information contained therein remain the property of BeaconMedies and may not be used for other than the purpose for which it is loaned without the expressed written permission from BeaconMedies Engineering.	
Description:		Part Number:	Scale: 1/8
GENERAL ASSEMBLY 10HP DX LUBE VAC MOD 240G RECEIVER		4107 8522 13	<b>D</b>
DN:	HOP100727	Rev:	00
Sheet	1 of 1	DO NOT SCALE THIS DOCUMENT	