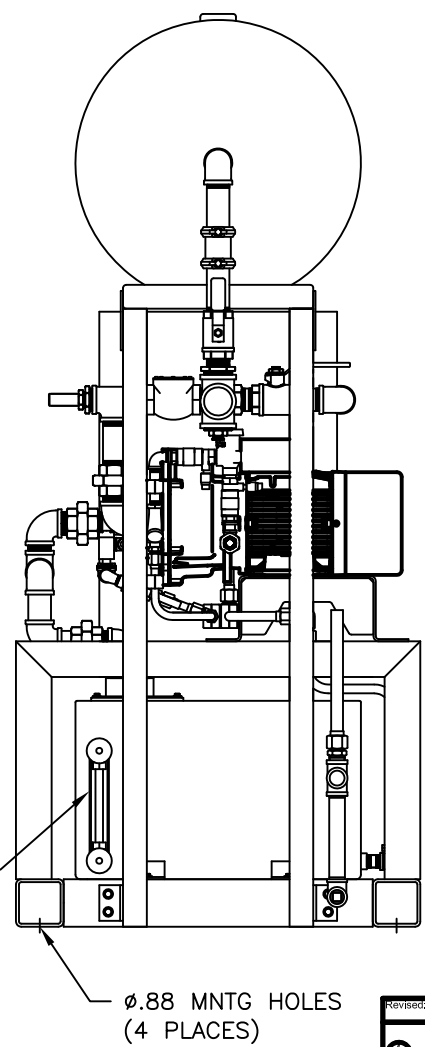
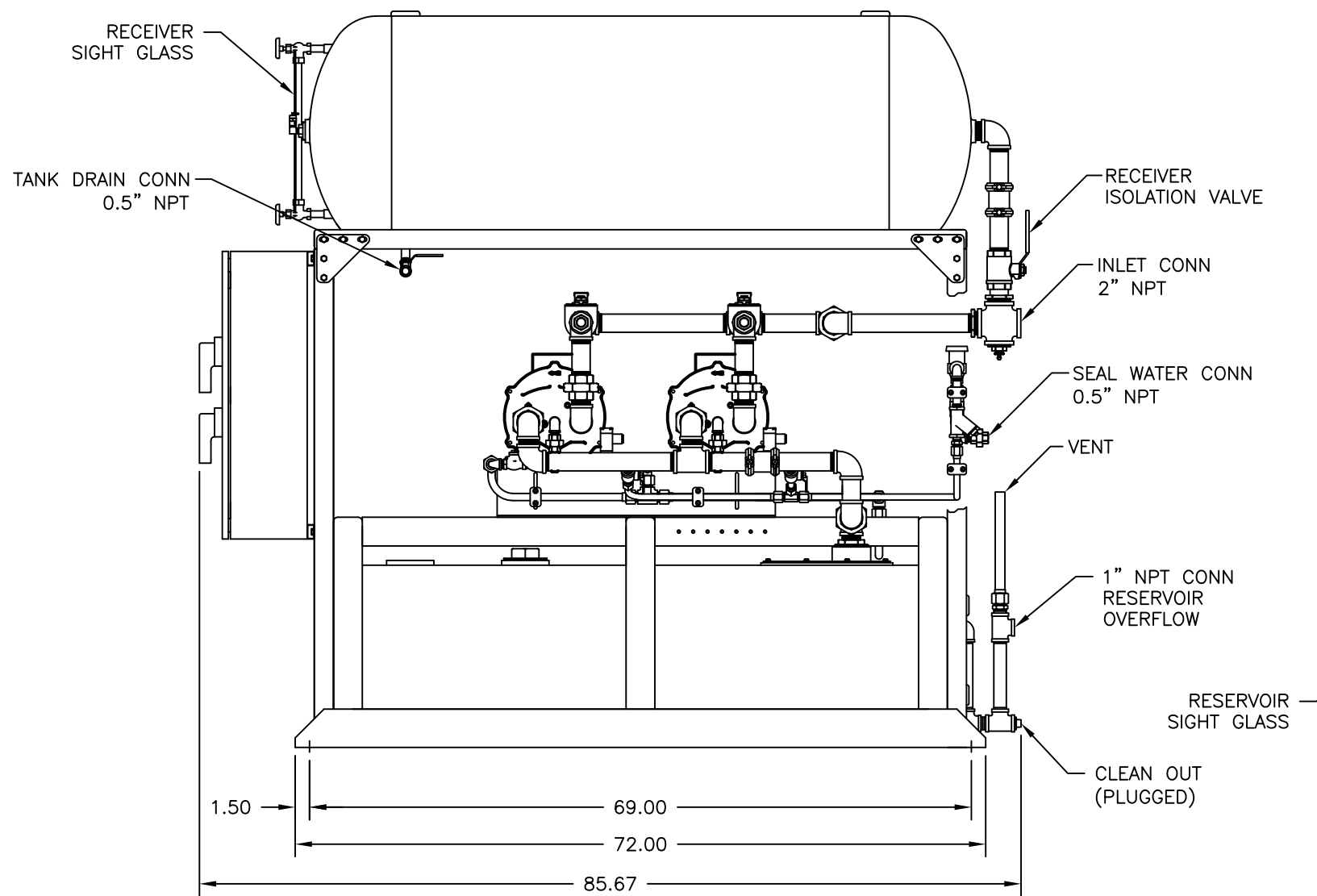
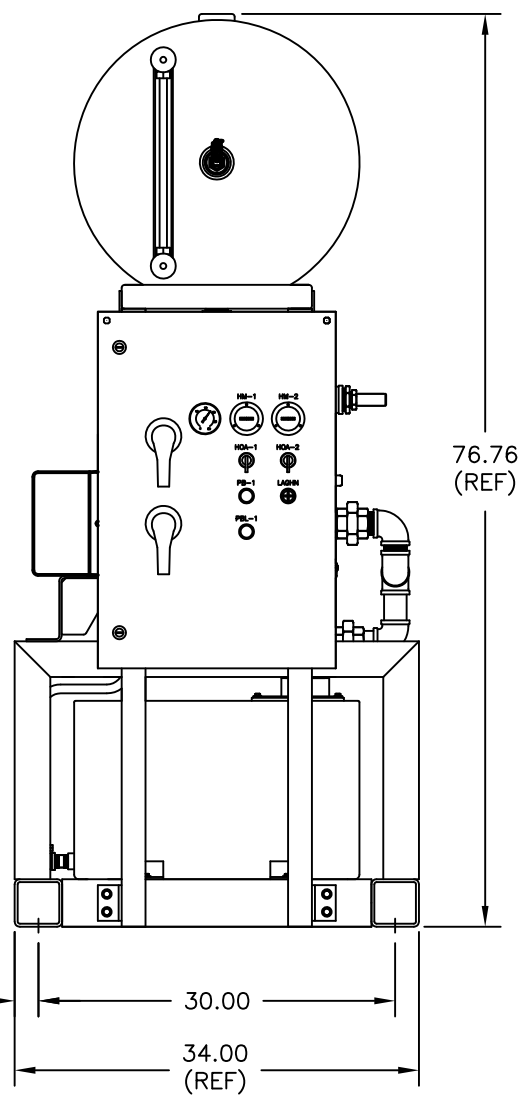


NOTES:

1. INTAKE, DISCHARGE, SEAL WATER FLEX HOSES AND VIBRATION ISOLATORS WILL BE SHIPPED LOOSE.
2. ALLOW 36 INCHES IN FRONT OF CONTROL PANEL FOR MAINTENANCE AND VENTILATION, ALL OTHER SIDES REQUIRE 24 INCHES OF CLEARANCE.
3. NOISE LEVEL AND SYSTEM DATA REFLECT ONE VACUUM PUMP IN OPERATION.
4. _ INDICATES VOLTAGE REQUIREMENTS: A = 208V, B = 230V & C = 460V
5. CONTROL SYSTEM AND VACUUM RECEIVER REMOVED IN TOP VIEW.

COMPLETE SYSTEM MODEL NO.	RECEIVER (GAL)	UNIT (HP)	CAPACITY @ 19" Hg (SCFM)		NOISE LEVEL dB(A)	SYSTEM WEIGHT (lbs)
			PUMP	SYSTEM		
LPV-5D-RC120V-D_	120	5	30	30	71	~1,087



Revised: BKV	Date: 9/20/2018	Drawn: MDB	Date: 2/14/11
			Scale: 1/8"
Description: GEN ASM LL DPX CAMEL VACUUM SYSTEM TYPE 1 - VECTRA SX20M/5HP, 120 G		Part Number: 4107 8527 51	
Sheet 1 of 1		Rev: 02 HOP161044 DO NOT SCALE THIS DOCUMENT	