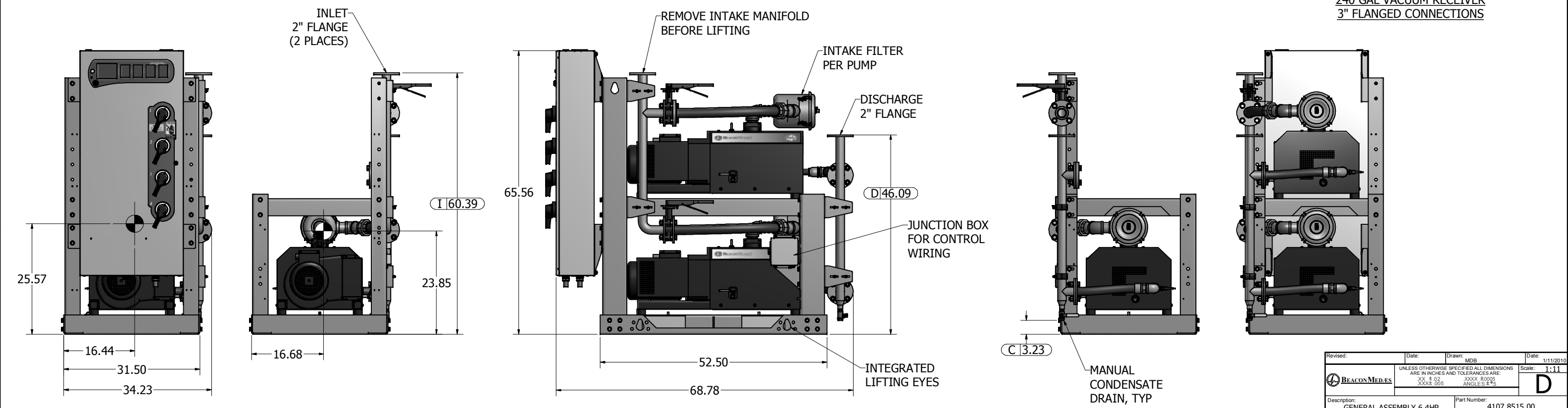
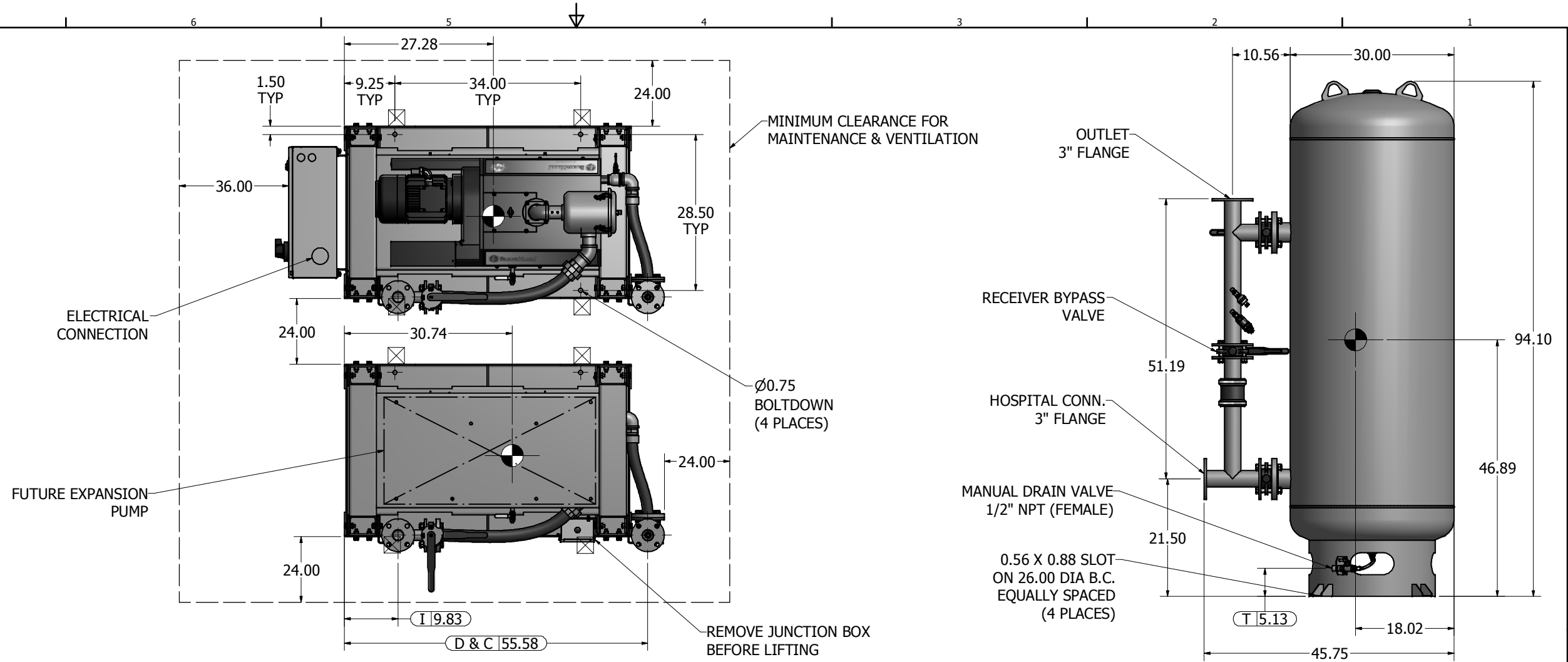


This drawing and the information contained thereon remain the property of BeaconMedes and may not be used for other than the purpose for which it is loaned without the expressed written permission from BeaconMedes Engineering.

- Notes:
- DISCHARGE MUFFLER WILL BE SHIPPED LOOSE.
 - DX MODULE W/PANEL WEIGHT: 1,839 LBS.
DX MODULE WEIGHT: 1,662 LBS. (INCLUDES FUTURE EXPANSION PUMP)
240G TANK WEIGHT: 713 LBS
 - ☒ INDICATES LIFTING POINT.
 - DENOTES CENTER OF GRAVITY. (INCLUDES FUTURE EXPANSION MODULE)

| SYSTEM CONNECTIONS | |
|--------------------|---------------------------|
| ID | DESCRIPTION |
| I | INLET LOCATION |
| D | DISCHARGE LOCATION |
| C | CONDENSATE DRAIN LOCATION |
| T | TANK DRAIN |



| | | | |
|--|---------|------------------------------|----------------------------|
| Revised: | Date: | Drawn: MDB | Date: 1/11/2010 |
| UNLESS OTHERWISE SPECIFIED ALL DIMENSIONS ARE IN INCHES AND TOLERANCES ARE: XXX ± 0.2 XXX ± 0.005 XXX ± 0.05 ANGLES ± 9° | | | |
| Description: GENERAL ASSEMBLY 6.4HP TX-X-QX CLAW VAC MOD 240G RECEIVER STANDARD AND O2 ASSURED | | Part Number: 4107 8515 00 | Scale: 1:11 |
| DN: USN100251 | Rev: 00 | Sheet 1 of 1 | DO NOT SCALE THIS DOCUMENT |