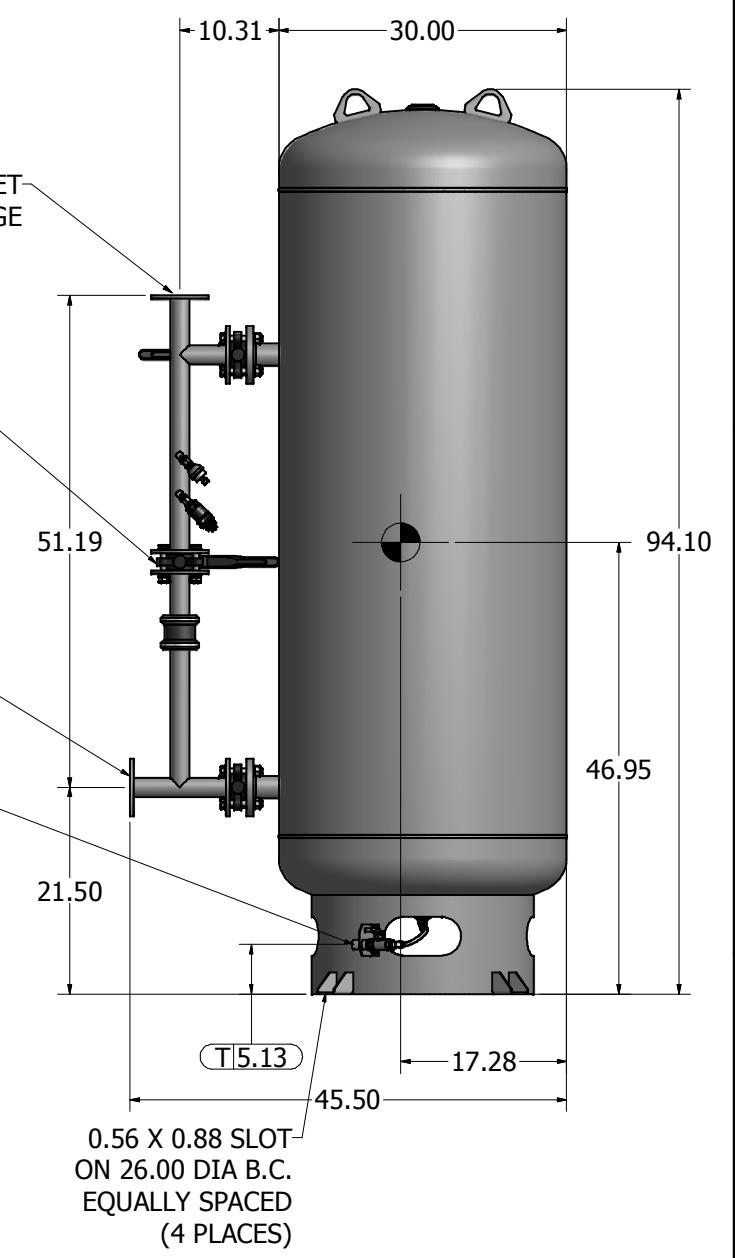
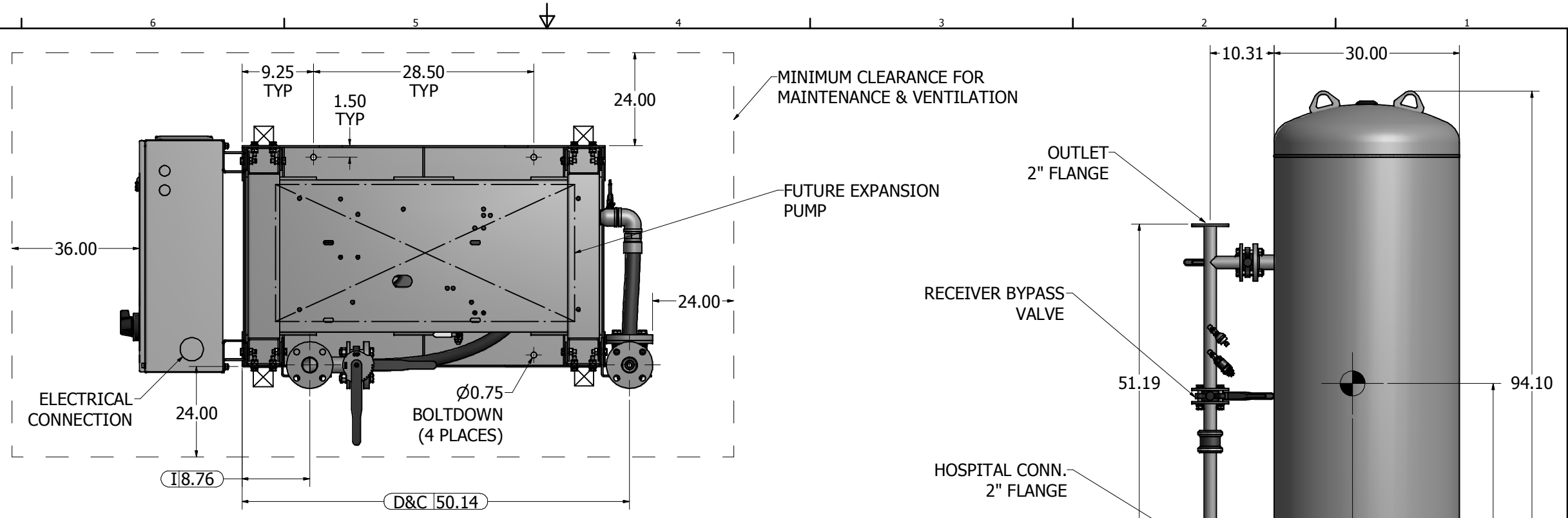


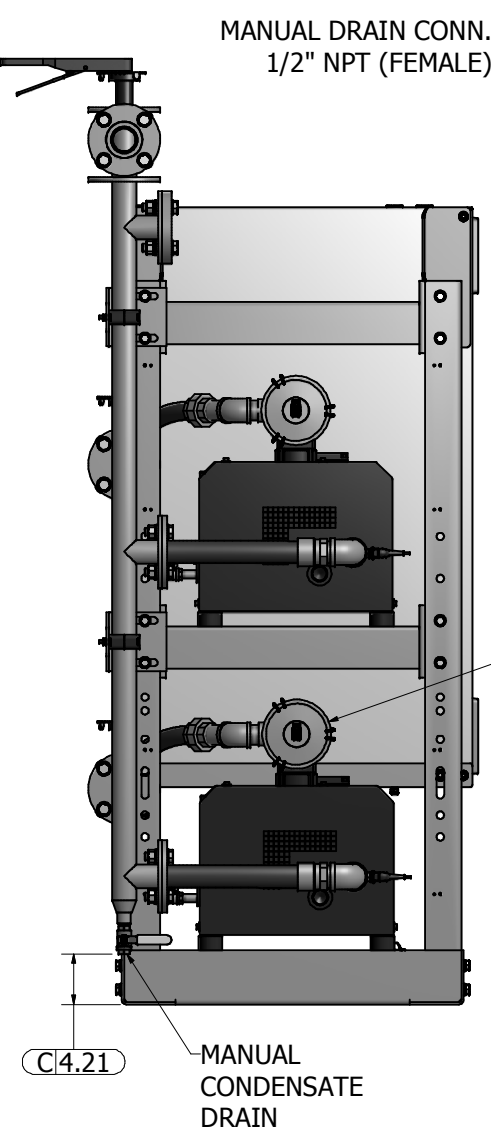
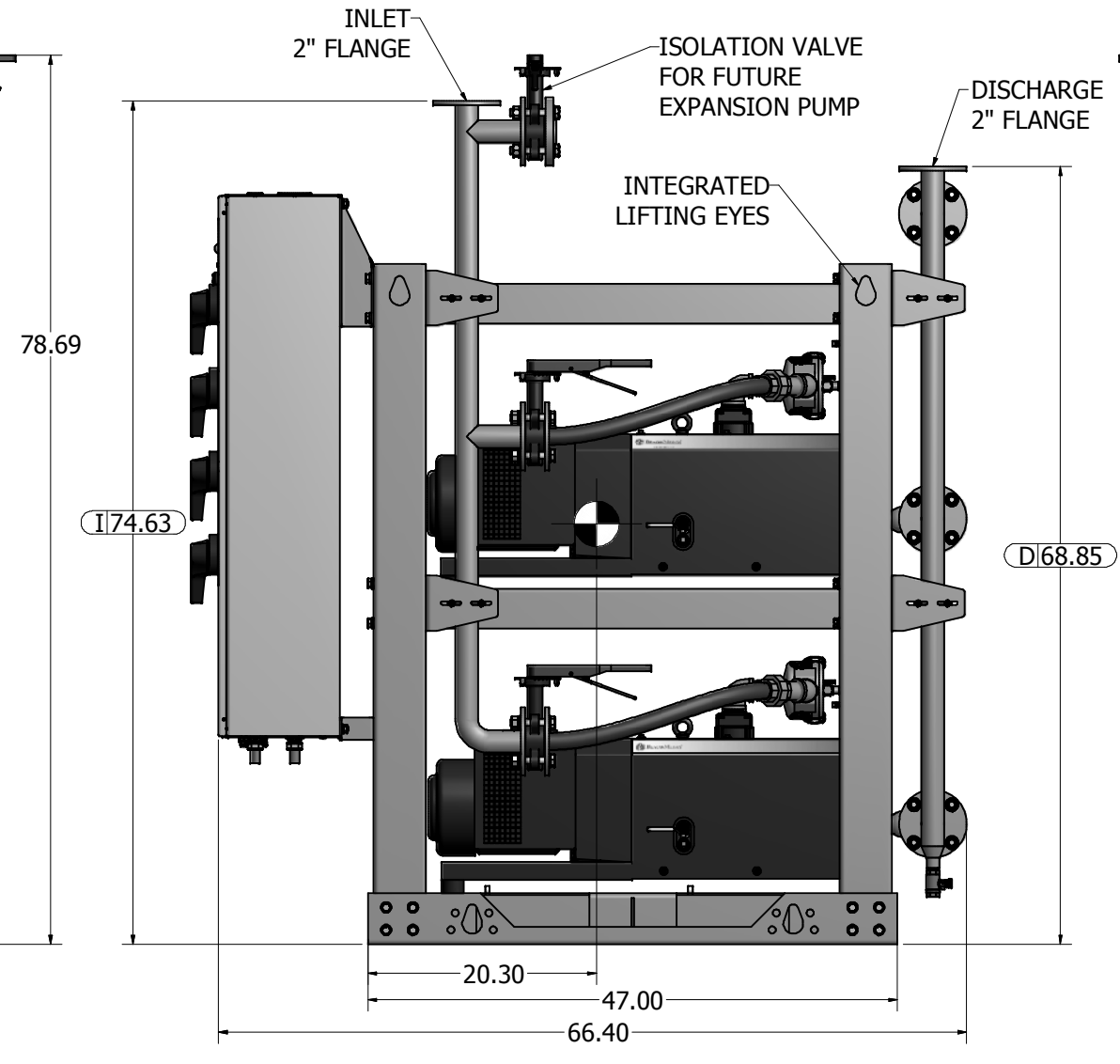
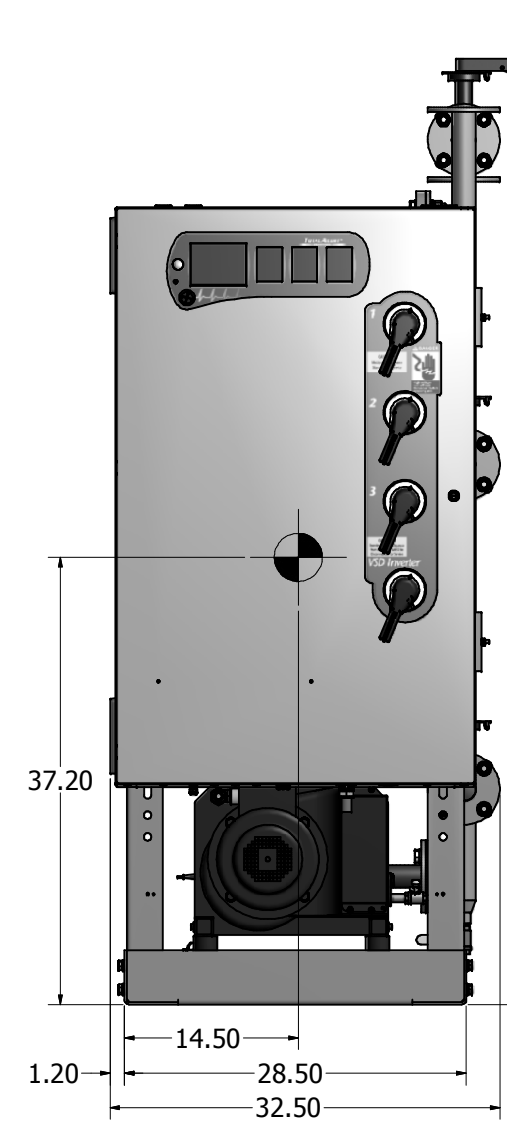
Notes:

1. DISCHARGE MUFFLER WILL BE SHIPPED LOOSE.
2. PUMP MODULE WEIGHT: 2,005 LBS (INCLUDES FUTURE EXPANSION PUMP).
240G TANK WEIGHT: 693 LBS
3. ☒ INDICATES LIFTING POINT.
4. ● DENOTES CENTER OF GRAVITY (INCLUDES FUTURE EXPANSION PUMP).

SYSTEM CONNECTIONS	
ID	DESCRIPTION
I	INLET CONNECTION
C	DISCHARGE CONNECTION
D	CONDENSATE DRAIN CONNECTION
T	TANK DRAIN



240 GAL VACUUM RECEIVER
2" FLANGED CONNECTIONS
(SCALE 1:10)



Revised:	Date:	Drawn: usnbw	Date: 3/29/2010
		This drawing and the information contained therein remain the property of BeaconMedes and may not be used for other than the purpose for which it is loaned without the expressed written permission from BeaconMedes Engineering.	
Description: GENERAL ASSEMBLY 5.4HP DX-X-TX CLAW VSD VAC MOD 240G RECEIVER STANDARD AND O2 ASSURED		Part Number: 4107 8515 45	Scale: 1/8 Rev: 00
Sheet 1 of 1		DO NOT SCALE THIS DOCUMENT	