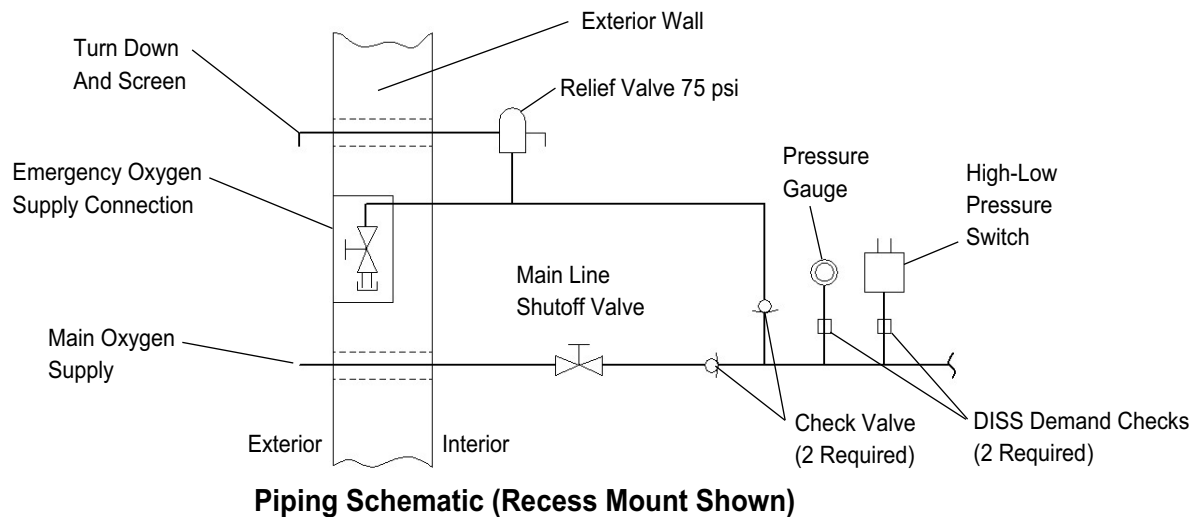
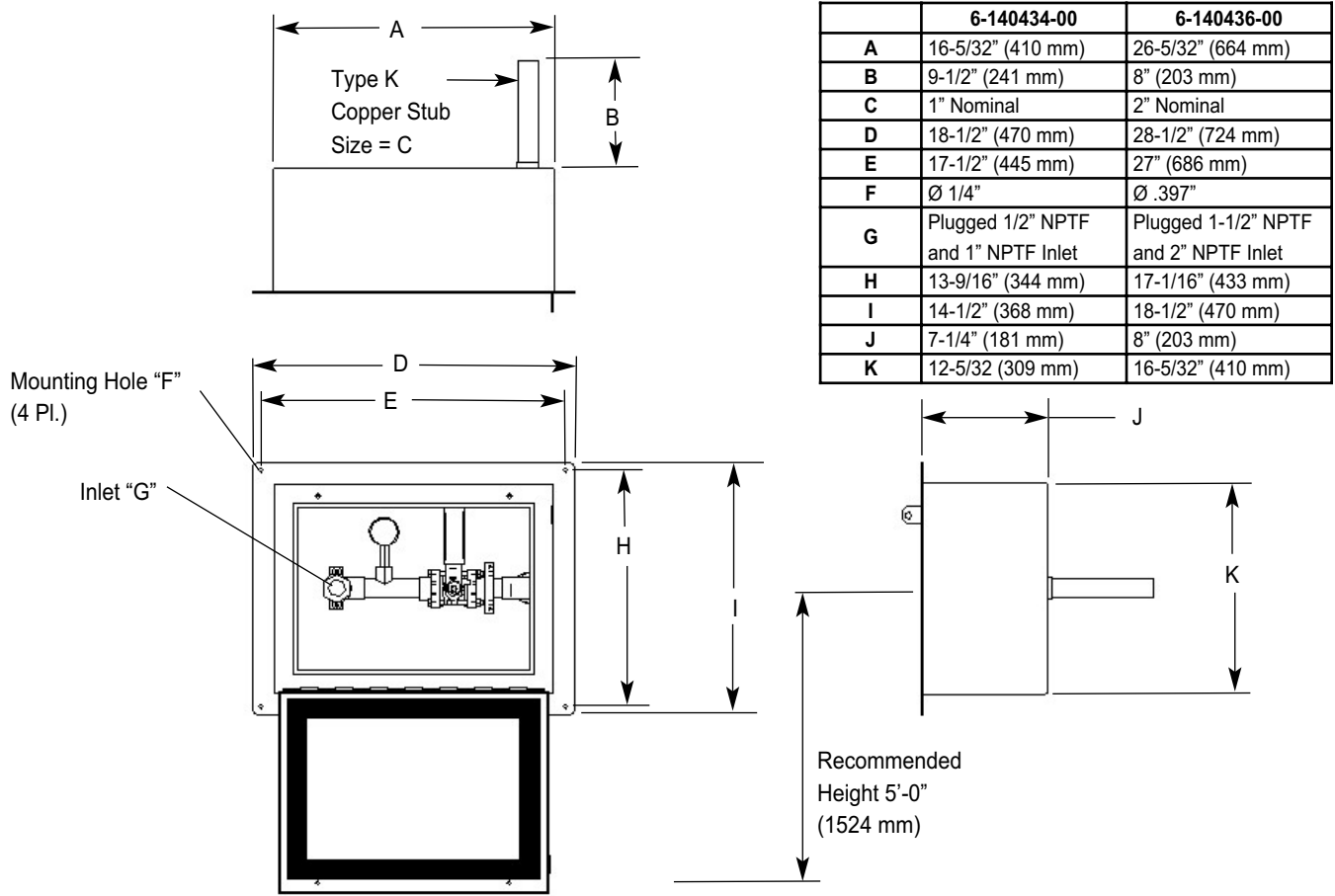


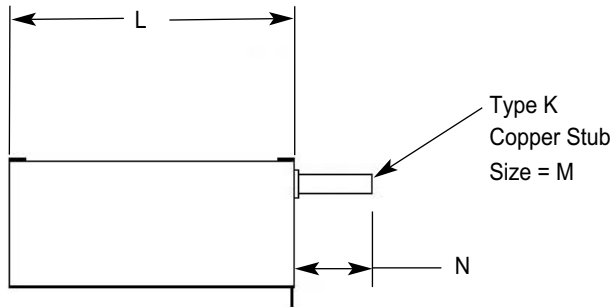
# Emergency Oxygen Supply Connection (EOSC) Installation Instructions

- 6-140434-00 - Recessed Mount - 1" Valve
- 6-140435-00 - Surface Mount - 1" Valve
- 6-140436-00 - Recessed Mount - 2" Valve
- 6-140437-00 - Surface Mount - 2" Valve

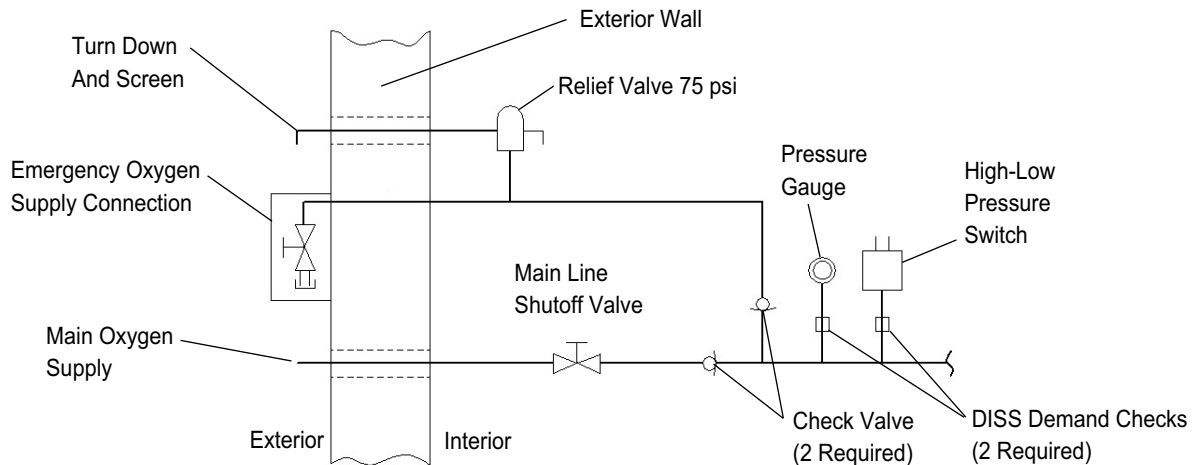
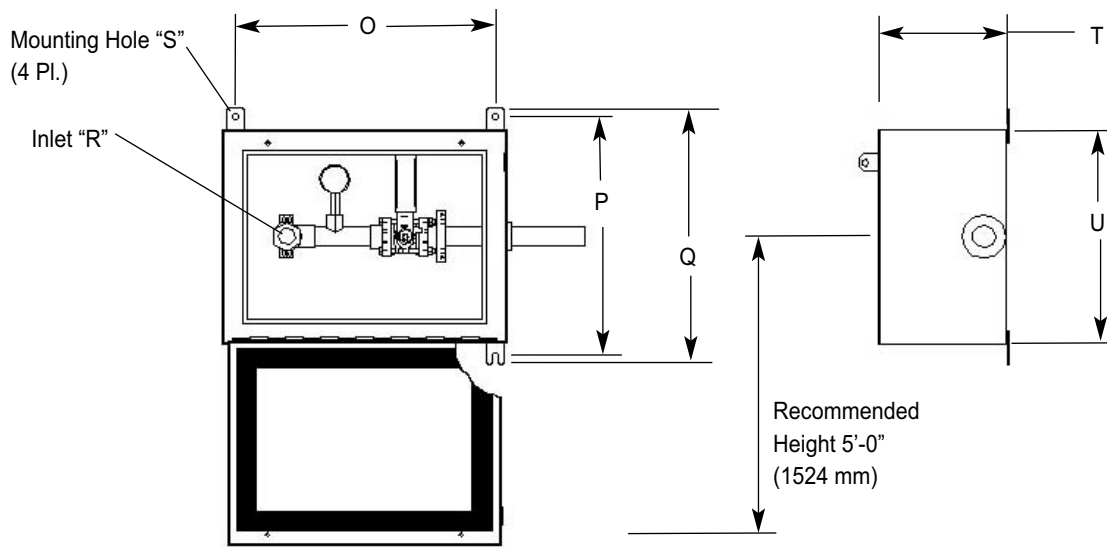
Refer to the figures and table below for recessed mount box dimensions and piping schematic.



Refer to the figures and table below for surface mount box dimensions and piping schematic.



	6-140435-00	6-140437-00
<b>L</b>	16-5/32" (410 mm)	26" (660 mm)
<b>M</b>	1" Nominal	2" Nominal
<b>N</b>	4" (102 mm)	8" (203 mm)
<b>O</b>	14-7/16" (367 mm)	24" (610 mm)
<b>P</b>	14-5/32" (360 mm)	18-5/32" (461 mm)
<b>Q</b>	15-5/32" (385 mm)	19-5/32" (486 mm)
<b>R</b>	Plugged 1/2" NPTF and 1" NPTF Inlet	Plugged 1-1/2" NPTF and 2" NPTF Inlet
<b>S</b>	Ø .397"	Ø .397"
<b>T</b>	7-13/64" (183 mm)	8" (203 mm)
<b>U</b>	12-5/32" (309 mm)	16-5/32" (410 mm)



**Piping Schematic (Surface Mount Shown)**



## EOSC Installation

1. Mount EOSC on an exterior wall in accordance with plans, specifications and NFPA-99 Standards.
2. Refer to figures on previous pages for size and location of mounting holes.
3. Securely anchor EOSC to wall (fasteners not provided).
4. Install appropriate pipe hangers on pipeline to prevent weight of supply lines from being supported by EOSC.

**⚠ CAUTION:**  
Before brazing, make certain appropriate heat sink material is around copper tube extension to prevent damage to valve seals.

5. Braze connection to pipeline system per NFPA-99 Standards.

**NOTE:**

- \* It is our interpretation on NFPA-99 that all relief valves and check valves be installed on interior of building.
- \* Each EOSC is supplied with two pipe thread female connections (refer to figures on previous pages). It is recommended local gas supplier be contacted to find exact connection to be used in an emergency.
- \* The outside lock is to be provided by health care facility. It is recommended that lock be identically keyed to one used on gate of bulk oxygen park to expedite entry in event of an emergency.

## Replacement Parts List

Part Number	Description
6-290567-00	4 Bolt Ball Valve Repair Kit (1" Valve)
6-290570-00	4 Bolt Ball Valve Repair Kit (2" Valve)
0205-8202-300	100 PSI Gauge



*Corporate Headquarters*

BeaconMedæS  
1800 Overview Drive  
Rock Hill, SC 29730  
Phone (803) 817-5600  
Fax (803) 817-5750

**For technical support or  
to place an order call:**

1-800-756-2590  
Fax (803) 817-5750

[www.beaconmedaes.com](http://www.beaconmedaes.com)