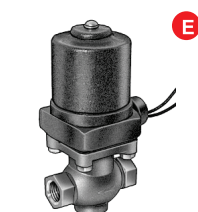
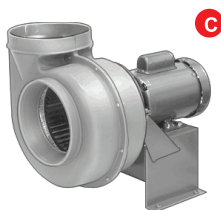
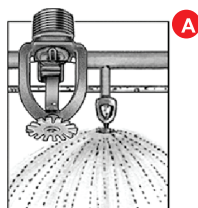
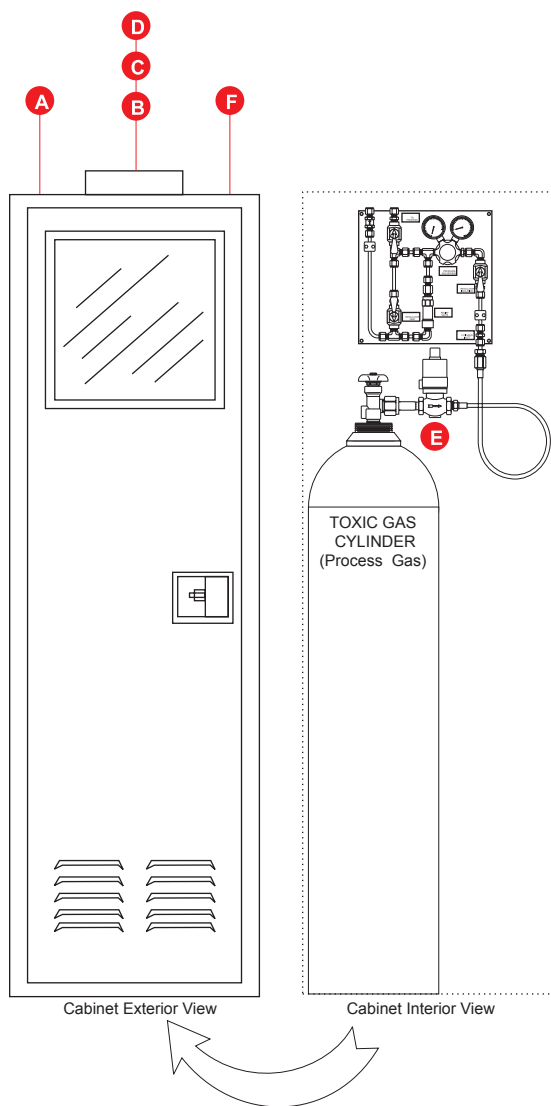


## APPLICATIONS

### Gas Cabinet Requirements for Toxic Gases



#### WATER SUPPLY FOR THE SPRINKLER

**NFPA 55 - 6.16.3 Fire Protection** - "Gas cabinets used to contain toxic, highly toxic, or pyrophoric gases shall be internally sprinklered."

#### GAS DETECTOR

(by BeaconMedaes...Strongly Recommended)

**NFPA 55 - 7.9.3.2.1.2 - Gas Detection** - "The gas detection system shall monitor the exhaust system at the point of discharge from the gas cabinet, exhausted enclosure, or gas room."

#### EXHAUST FAN (by Installing Contractor)

Indoor gas cabinets require ventilation. Below are NFPA 55's exhaust fan requirements:

- Air velocity: 200 ft./min. with access window open  
150 ft./min. (no less) at any single point
- Explosion-proof classification might be required
- Material compatibility of exhaust fan components with gas service to be verified

#### DUCT WORK (by Installing Contractor)

**Compatibility:** The duct materials used must be compatible with the gas being vented  
Duct work must be installed to prevent any leaks to the atmosphere.

#### FAIL-SAFE AUTOMATIC CLOSING VALVE (By BeaconMedaes)

**NFPA 55 - 7.9.3.2.2 - Fail-Safe Automatic Closing Valve** - "An approved automatic-closing fail-safe valve shall be located immediately adjacent to and downstream of active container, cylinder, or tank valves."

#### WARNING DEVICE

(By BeaconMedaes or Others)

**NFPA 55 - 7.9.3.2.2.4** - "The gas detection system shall also alert persons on-site and a person off-site when the gas concentration in the storage/use area reaches OSHA PEL, OSHA ceiling limit, or OSHA STEL for the gas employed."

#### TREATMENT SYSTEMS (By Others)

**NFPA 55 - 7.9.3 - Treatment System** - "Except as provided in 7.9.3.1 and 7.9.3.2, gas cabinets, exhausted enclosures, and gas rooms containing toxic or highly toxic gases shall be provided with exhaust ventilation, with all exhaust directed to a system designed to process accidental release of gas."

**NFPA 55 - 7.9.3.2 - Use of Toxic Gases** - "Treatment systems shall not be required for toxic gases in use where containers, cylinders, and tanks are provided with controls specified in 7.9.3.2.1 (Gas Detector) and 7.9.3.2.2 (Fail-Safe Automatic Closing Valve)."