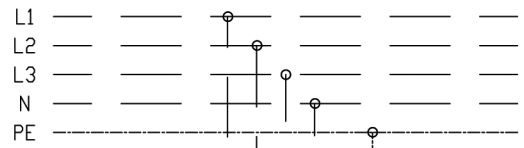
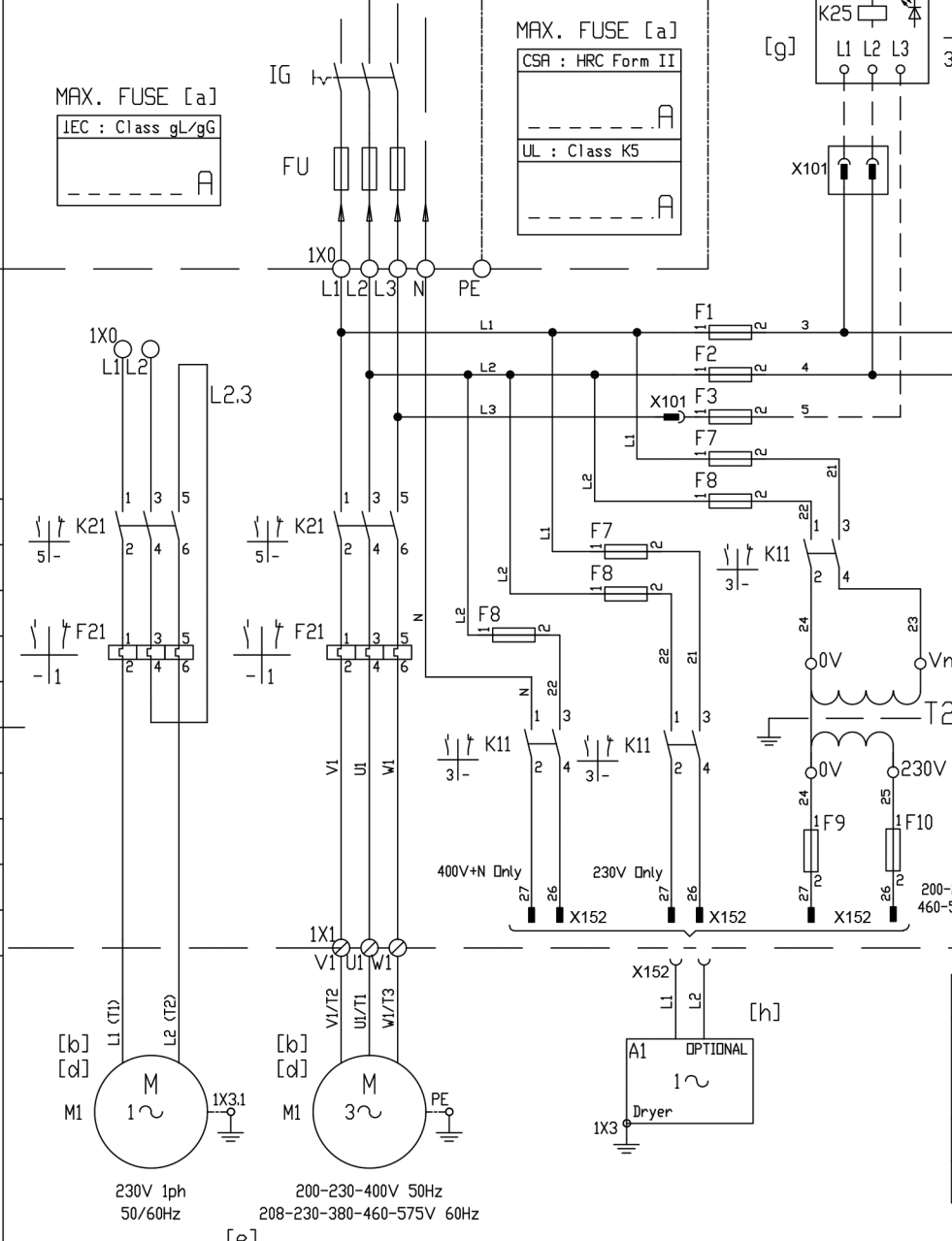


Customer's Installation



MAX. FUSE [a]  
IEC : Class gL/gG  
A

MAX. FUSE [a]  
CSA : HRC Form II  
UL : Class K5  
A



- F1-8 Fuse link
  - FU Fuses (customer care installation)
  - IG Disconnector switch (customer care installation)
  - K21 Contactor
  - F21 Overload relay
  - K11 Dryer relay (optional)
  - K25 Phase sequence relay
  - K40 Unloader starter timer (single phase only)
  - P1 Hourmeter "RUNNING HRS"
  - T1 Control transformer
  - T2 Dryer transformer (option)
  - S1 ON/OFF switch
  - H1 Lamp (part of S1)
  - PSR11 Pressure switch
  - TSHH11 Temperature switch (element)
  - B1 EWD on tank/30l vessel (option)
  - Y3 Solenoid unload starter (single phase only)
  - M1 Drive motor
  - A1 ID dryer (optional)
- [a] Maximum fuses with regard to short circuit protection of starter. Cable section might impose fuses of smaller value.
  - [b] Power supply to be observed for COUNTER clockwise rotation of drive motor. Rotation to be observed while facing the drive end shaft of the motor.
  - [c] To connect correct transfo voltage; see on transfo.
  - [d] Y/D connections made inside the terminal box of the motor.
  - [e] Bridges on 1X1:T4-T9 delivered loose with motor.
  - [f] Installed by A.C..
  - [g] - available only for dedicated units  
- on single phase units K25 and F3 are not installed and wires 13-14 are connected in 1X0
  - [h] Supply of dryer.

Installed	Features/optional components
	Integrated dryer A1: - F7/F8/F9/F10 fuses - K11 contactor - T2 autotransformer
	Phase sequence relay K25
	EWD B1

M1  
\_\_ kW \_\_ HP SF: \_\_

SETTING  
\_\_ V  
F21  
\_\_ A

A1  
\_\_ kW \_\_ HP  
Supply of Dryer

Contactor	ABB						Siemens
	AS09	AS12	AF16	AF26	AF30	AF38	
Model	M3	M3	M3.5	M4	M4	M4	M4
Terminals	M3	M3	M3.5	M4	M4	M4	M4
Recomm. Torque [Nm]	1.0	1.0	1.5	2.5	2.5	2.5	2.0-2.5
Coil terminals	M3	M3	M3.5	M3.5	M3.5	M3.5	M3
Recomm. Torque [Nm]	1.0	1.0	1.2	1.2	1.2	1.2	0.8-1.2
Transformer	T1	T2					
Recomm. Torque [Nm]	0.5-1.0	0.5-1.0					

All materials supplied are in compliance with the requirements of the List of Prohibited Substances

Name		DIAGRAM SERVICE		LES2-7 P/FF		Confidentiality Class acc. to 1102K	
Material		SEE DRAWING		ACD		2	
Treatment		See Drawing		ACD		CAI	
Scale		1:1		Family		A2 Compare	
Drawn by		INEansa		Blank nr.		Replaces	
Version Dwg		00.00		Blank wt. 0 Kg		Fini wt. 0 Kg	
status		Des checked.		Prod checked.		Approved.	
Parent 3D Model		Ed. Version 3D		Preliminary		Date 2014-08-20	
Designation		Sheet ( ) 01 01		8928 4505 07		Drawing owner CAI	

CONFIDENTIAL: This document is our property and shall not be distributed or used without our permission. It is intended for manufacturing or communication to any other person or company.

Note	Position	Modified from	Date	Intr./Appd.
00.00			2014-08-20	