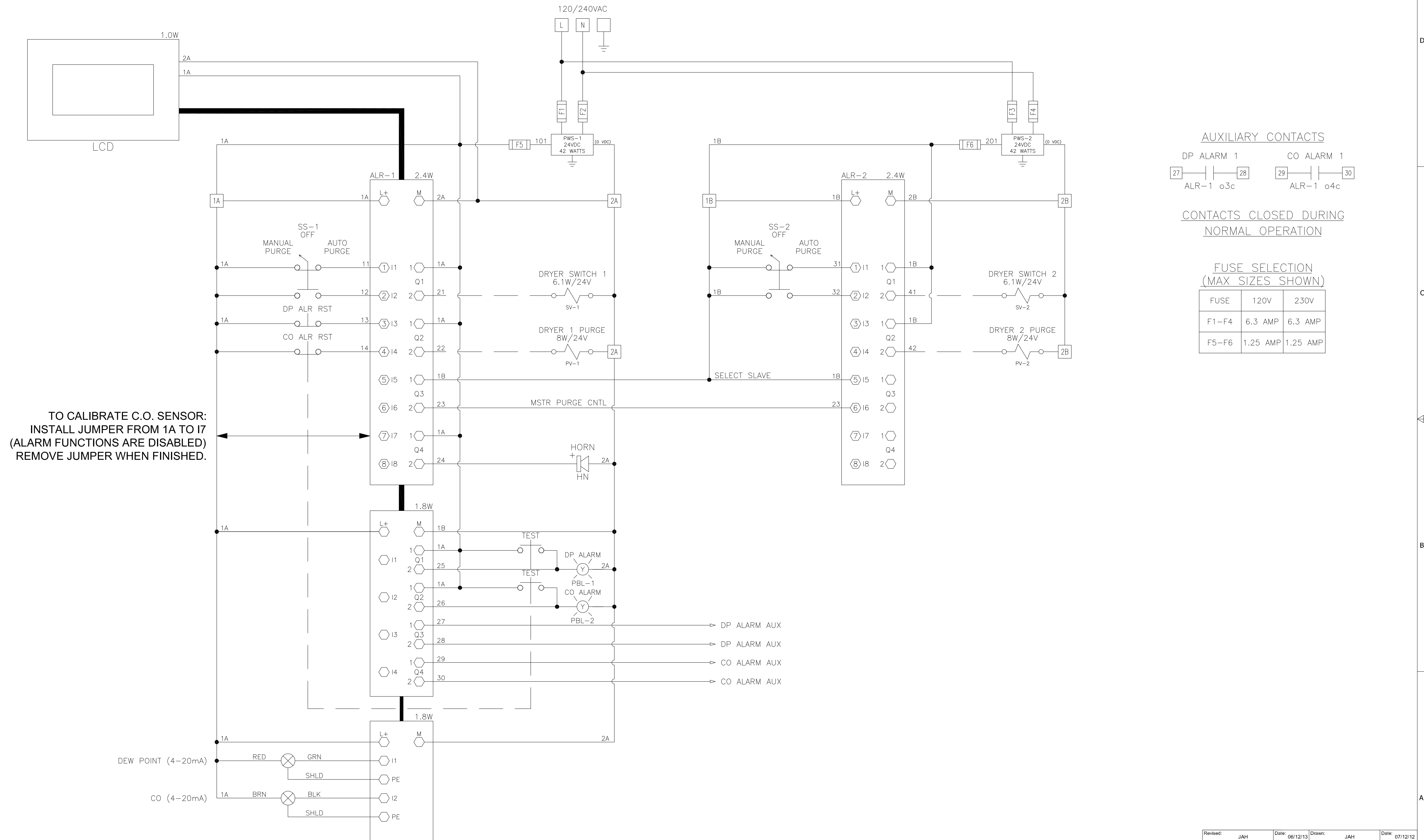
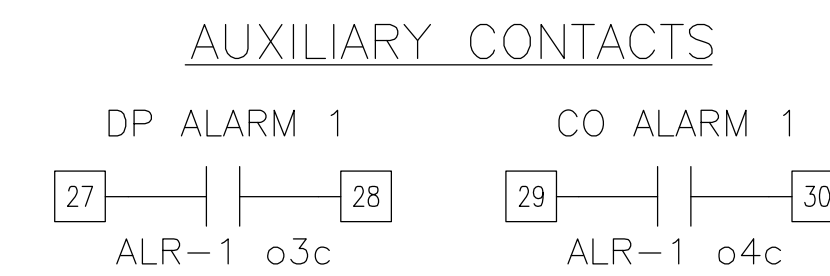


Notes:

1. MAIN DISCONNECT PROVIDED BY OTHERS
2. FIELD WIRING TO BE COPPER RATED FOR 75°C MINIMUM.
3. - - - - INDICATES FIELD WIRING OUTSIDE OF BOX.
4. ALR-1 & ALR-2 PROGRAM NUMBER: 4107 6004 04



TO CALIBRATE C.O. SENSOR:
INSTALL JUMPER FROM 1A TO 17
(ALARM FUNCTIONS ARE DISABLED)
REMOVE JUMPER WHEN FINISHED.



CONTACTS CLOSED DURING
NORMAL OPERATION

**FUSE SELECTION
(MAX SIZES SHOWN)**

FUSE	120V	230V
F1-F4	6.3 AMP	6.3 AMP
F5-F6	1.25 AMP	1.25 AMP

Revised: JAH	Date: 06/12/13	Drawn: JAH	Date: 07/12/12
<small>This drawing and the information contained herein remain the property of BeaconMedics and may not be used for other than the purpose for which it is issued without the expressed written permission from BeaconMedics Engineering.</small>			Scale: NTS
BeaconMedics		D	
Description: DWG WIRING CONTROL DX DRYER - DP & CO 120/240VAC		Part Number: 4107 8540 78	
DN:	HOP130703	Rev:	02
Sheet 1 of 1		DO NOT SCALE THIS DOCUMENT	